

TIMARU YACHT AND POWER BOAT CLUB

Rhumbline

Edition: 1 April 2023

THIS EDITION ...

- [Club impacted by Penguins](#)
- [Wētā-2 prototype spotted](#)
- [Sailing section ... update on the permanent rounding mark](#)

[Back to top](#)

CLUB IMPACTED BY PENGUINS

Pressure from the recent boom in penguin numbers has meant the TYPBC has had to re-think its jetty maintenance. “The increasing bird numbers mean the space in front of the jetty is increasingly important for these little blue penguins” said the visiting president of the Waikato Blue Penguin society. “The maintenance really must include an over-bridge to allow the penguins free access to the beach without obstruction from all the public who use the jetty for fishing, or from the boats using the ramp” he said.

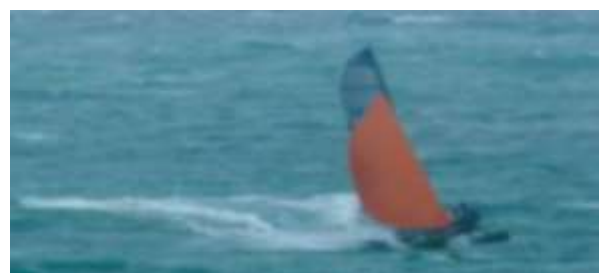
The TYPBC so far has not commented other than to point out that the planned maintenance work is well advanced and that the visiting president, Mr I. Waddle, would be welcomed to join in at any working bee.



[Back to top](#)

WĒTĀ-2 PROTOTYPE SPOTTED

Given the incredible success of Wētā-1, the mark2 version may have recently been spotted while undergoing sea trials. Images were a little unclear due to the spray and incredible speed, but it looks to be embracing much of the foiling technology employed by America’s cup and SailGP. “The nose foil is very long to enable those ocean sailors to cruise smoothly without the foil breaking surface in the exciting East Coast swells”, an unnamed inside source said.



One of the Timaru crew who imagined he saw a test run the other day when calling past Wētā’s R&D centre in Milford Sound said it looked incredibly fast. “If you think a Wētā-1 is ‘wet’, you should see the spray put up by Wētā-2” he said. “I tried to get a picture but it had already gone past by the time my iphone had gone through its Android update, so I missed it” he said.

The R&D centre inside source said “Boat length is a little longer so those famous nose-dives and barrel rolls provide better spectator sport. And the rudder is a radical new self-steering design so we no-longer get caught up with snagging tiller extensions”. “Steering performance is greatly improved” the inside source said. “We’ve embraced AI so now all our skippers will learn faster and, although can’t guarantee it, we think they may also be less confused” she said. “1st April is a little late to be releasing a new yacht design, but it’s better than missing the season altogether”.

[Back to top](#)

SAILING SECTION

Not much to report in this issue... some great sailing continues into late Summer.

We haven't had an update on how the Port is getting on with building the island out in the Bay yet, but we have seen them loading up the sand and carrying it out there from time to time, all to add to the pile they're building up for us. It'll be great when that breaks the surface and we can start to use it to sail around instead of having to lay marks every Saturday. The next stage will be island beautification so the cruising section can land there and enjoy a picnic.



[Back to top](#)

*Don't want the Rhumbline? After this April Fools edition I can't blame you.
Reply with "UNSUBSCRIBE" in the header and we'll take you off our list*